

Ethics issues with the use of AI/ML

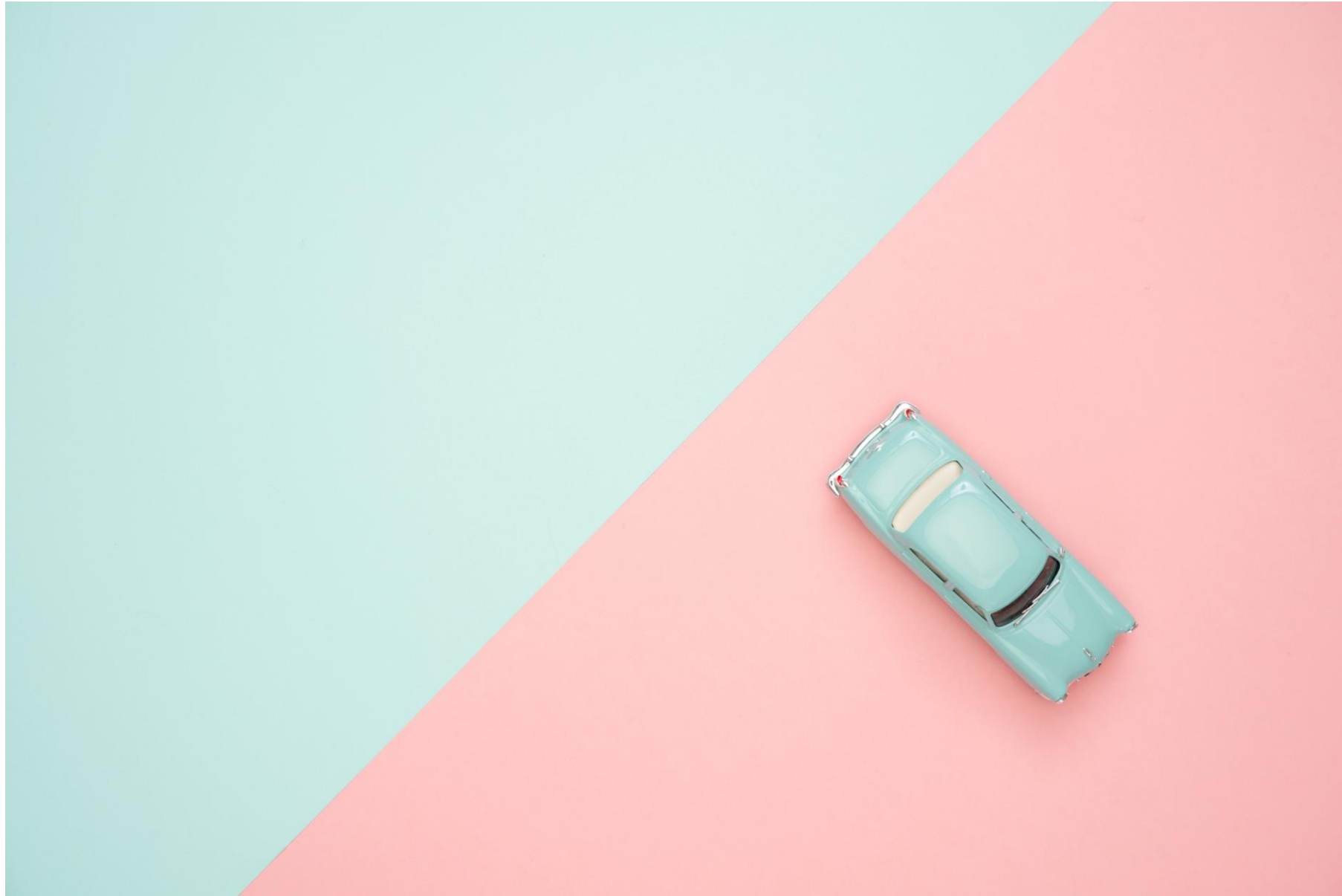
Vikas M Sharma, MBBS, MD (Psych)

Clinical Program Leader, Boehringer Ingelheim International GmbH
Independent Ethics Expert, European Research Council, European Commission

Disclosure Statement

- Full time employee of Boehringer Ingelheim International GmbH
- Views expressed are in personal capacity and may not reflect opinions/positions of the organizations I am associated with.

2020: the promise!



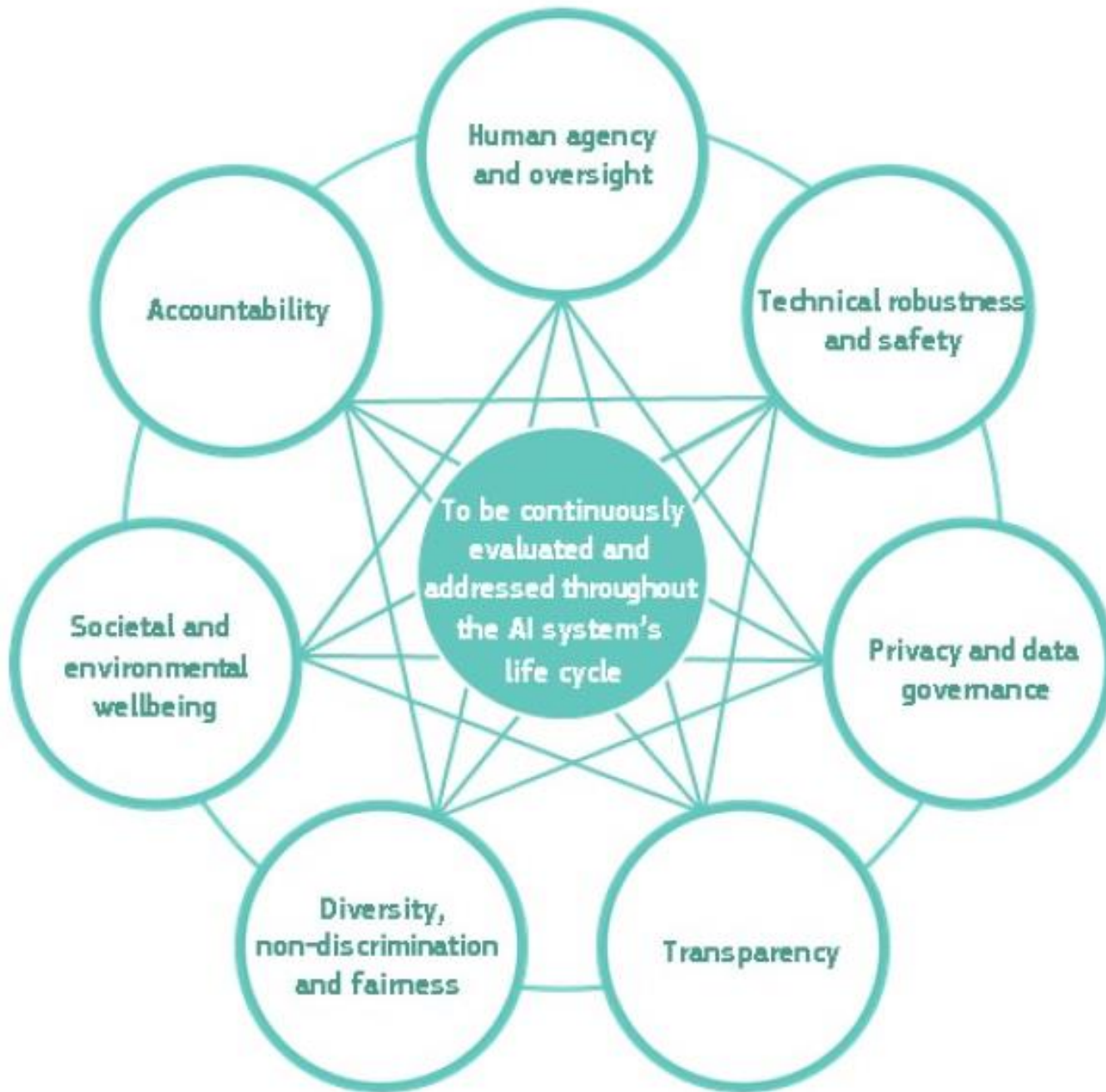
The big and the relevant issues!

The 'Big' issues!

- Consciousness of AI
- Singularity
- Autonomous decision taking by LAWS
- Job loss created by AI
- Malicious/Dual use of AI

The 'Relevant' issues!

- Protection of potentially sensitive data
- Decision making reliability
- Biases in training data
- Trust issues
- Opacity of the mechanics



Requirements for Realizing Trustworthy AIs

The big buckets of relevant issues



Trust and Perception:

- Lawful
- What happens with the data?
- Transparency and predictability
- Opacity of mechanics of the AI systems
- Fair distribution of the benefits



Reliability & safety:

- Inherent biases in the training datasets
- Beliefs and prejudices of AI developers
- Responsibility of decisions making of the AI systems
- Malicious use/unintentional harm



End user issues:

- Privacy and confidentiality
- Explainability; Impact on autonomy & decision making
- Impact on society

