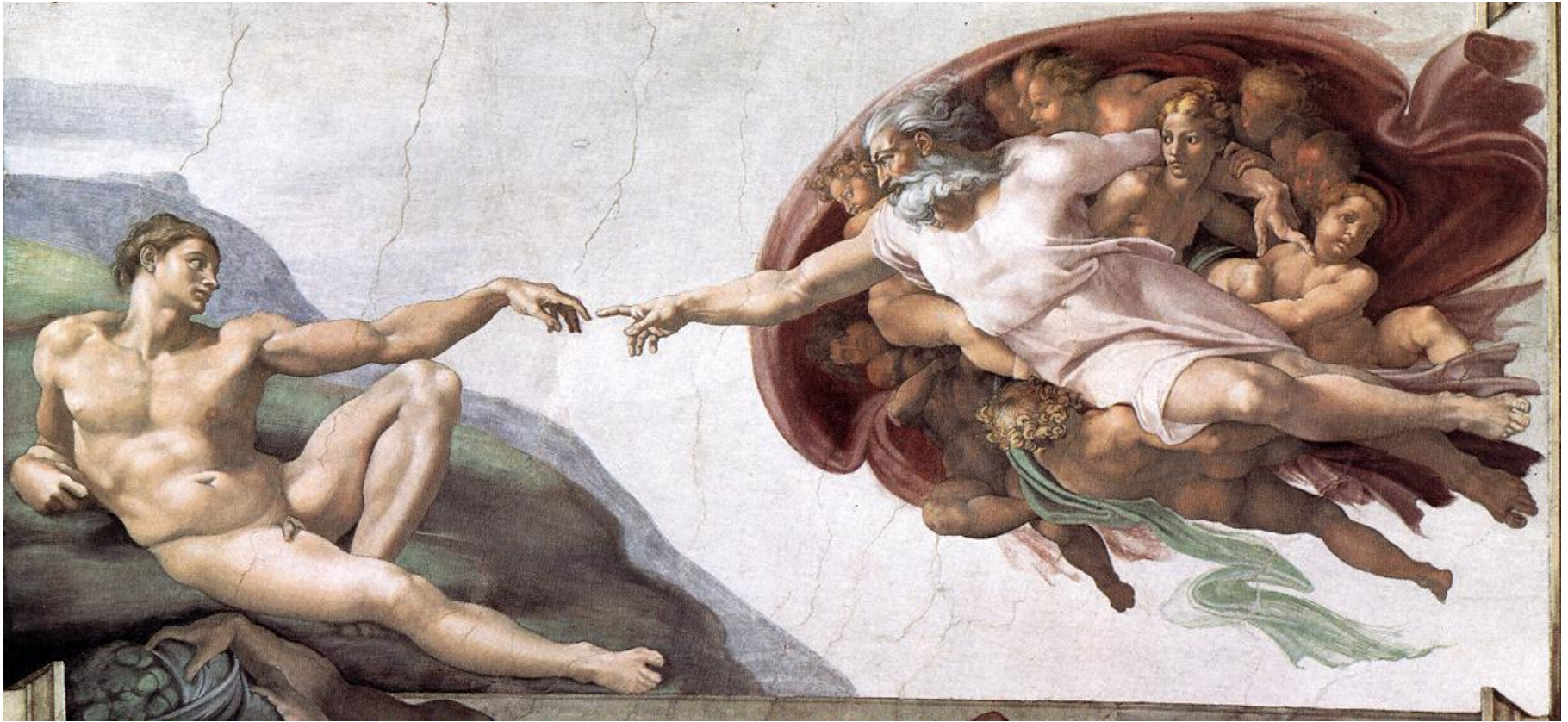


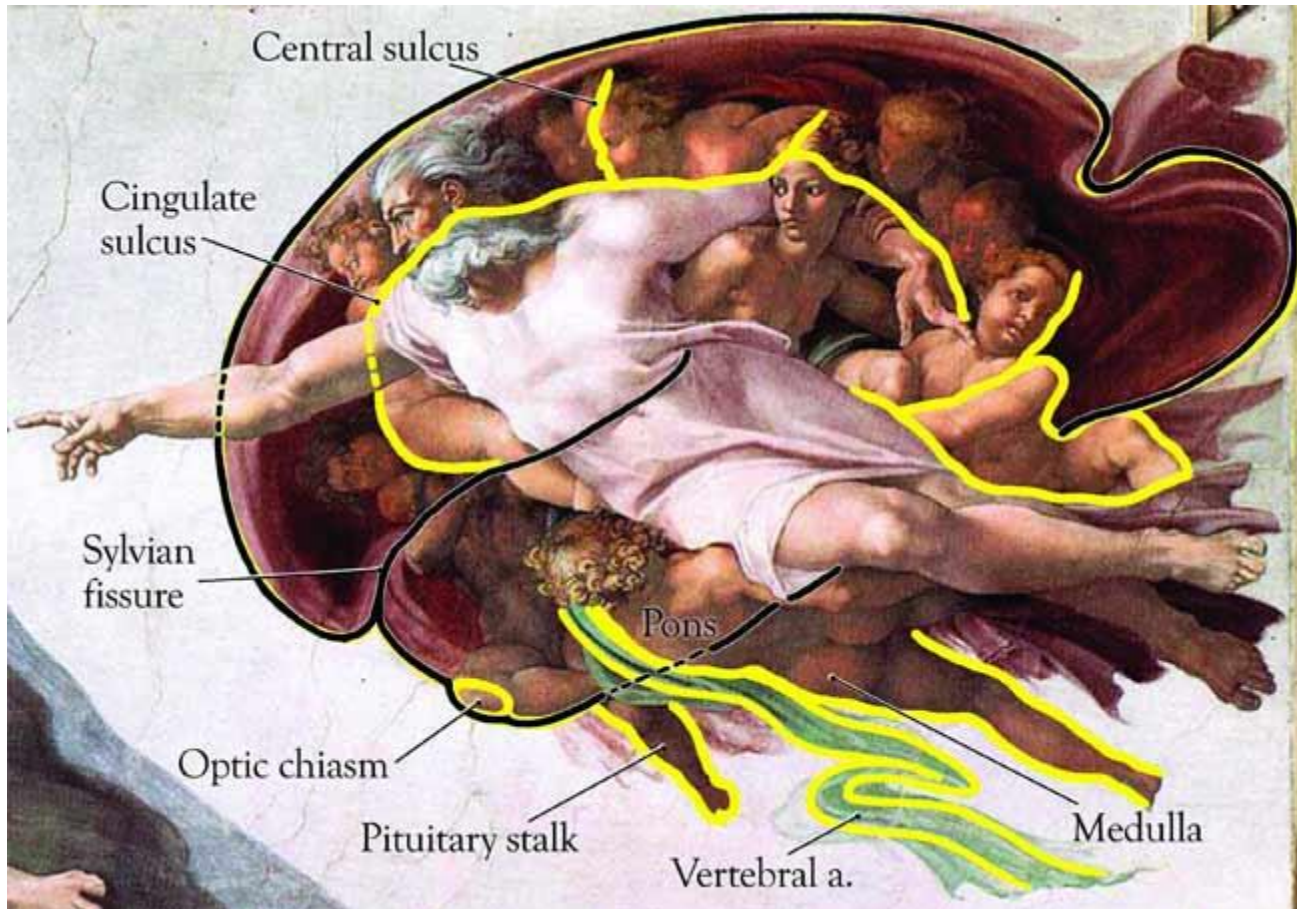
# Network Meta-analysis and Evidence-Based Treatment



Andrew A. Nierenberg, MD  
Thomas P. Hackett, MD, Endowed Chair in Psychiatry at MGH  
Director, Bipolar Clinic and Research Program  
Massachusetts General Hospital  
Professor of Psychiatry, Harvard Medical School

# Sanctity of EBM





# Which treatment for whom?

ORIGINAL CONTRIBUTION



Robert M. Califf, MD

## Scientific Evidence Underlying the ACC/AHA Clinical Practice Guidelines

Pierluigi Tricoci, MD, MHS, PhD

Joseph M. Allen, MA

Judith M. Kramer, MD, MS

Robert M. Califf, MD

Sidney C. Smith Jr, MD

**Context** The joint cardiovascular practice guidelines of the American College of Cardiology (ACC) and the American Heart Association (AHA) have become important documents for guiding cardiology practice and establishing benchmarks for quality of care.

**Objective** To describe the evolution of recommendations in ACC/AHA cardiovascular guidelines and the distribution of recommendations across classes of recommendations and levels of evidence.

**Data Sources and Study Selection** Data from all ACC/AHA practice guidelines issued from 1984 to September 2008 were abstracted by personnel in the ACC Science and Quality Division. Fifty-three guidelines on 22 topics, including a total of 7196 recommendations, were abstracted.

**C**LINICAL PRACTICE GUIDELINES are systematically developed statements to assist practitioners with decisions about appropriate health care for spe-

Less than 15% of cardiovascular guideline recommendations supported by high quality evidence.

# Pierre Charles Alexandre Louis

April 14, 1787 – August 22, 1872



# Boston Society of Medical Observation at Massachusetts General Hospital 1835



Louis PCA. Researches on the effects of blood-letting in some inflammatory diseases, and on the influence of tartarised antimony and vesication in pneumonitis. *Am J Med Sci* 1836;18:102-1 1

“[Physicians] were not prepared to discard therapies 'validated by both tradition and their own experience on account of somebody else's numbers.’”

Warner JH. Attitudes to Foreign Knowledge. In: *The Therapeutic Perspective: Medical Practice, Knowledge, and Identity in America, 1820-1835*. Cambridge, MA: Harvard University Press, 1986:185-206

Rangachari PK. Evidence-based medicine: old French wine with a new Canadian label? *J R Soc Med* 1997;90:280-284

# Alvan R. Feinstein, MD 1926-2001

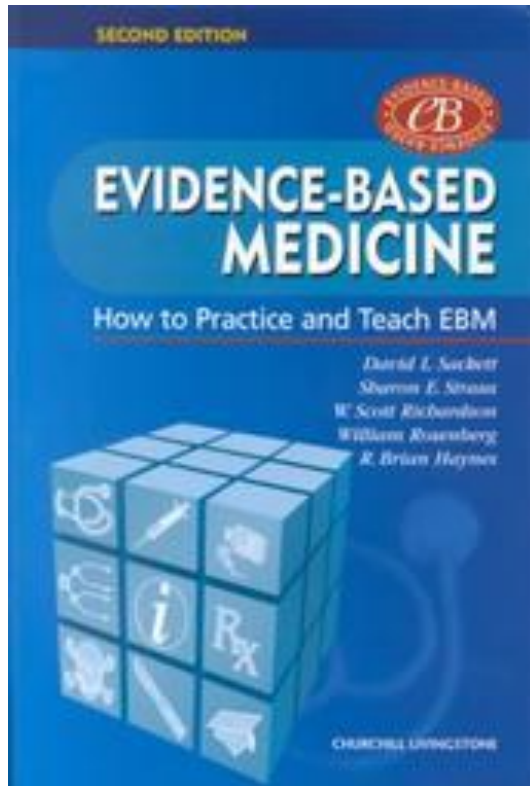
- Clinical Epidemiology
- “Comorbid”
- Author of
  - Clinical Epidemiology:  
The Architecture of  
Clinical Research
  - Clinimetrics
- Physicians benefit from  
being “numerate”





# David L. Sackett 1934-2015

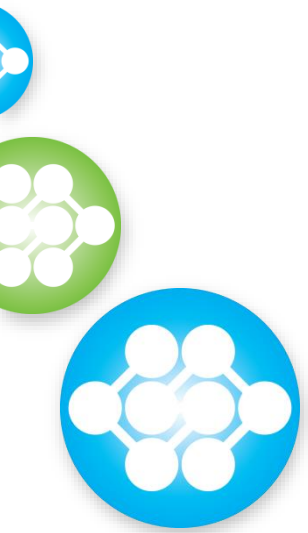
Kilgore S. Trout Research & Education Centre  
at Irish Lake, Markdale Ontario





**Clinical Research**

**mostly fails to inform practice**



# pcor**net**

The National Patient-Centered Clinical Research Network