

# Addressing challenges in the international assessment of social cognition

Gerhard Hellemann, Ph.D.

Semel Institute Biostatistics Core (SIStat)  
University of California, Los Angeles

[GHellemann@mednet.ucla.edu](mailto:GHellemann@mednet.ucla.edu)

October 2, 2012

# Disclosures

Nothing to disclose

# Overview of the Presentation

- ▶ Measurement of Social Cognition using the Meyer-Salovey-Caruso Emotional Intelligence Test (MSCEIT)
- ▶ Solving the problem of creating an international version of the MSCEIT
- ▶ Summary

## Measurement of Social Cognition

- ▶ Social cognition is measured using the managing emotions branch of the MSCEIT.
- ▶ Test takers are presented with a set of vignettes and asked to rate the utility of different emotion management strategies that the protagonists of these vignettes might employ.
- ▶ Vignettes cover a wide range of social situations (Daily Living, Work, Driving, Friendships, Parenting)
- ▶ Vignettes present male and female protagonists
- ▶ Responses are rated based on how well they match a consensus rating based on a representative sample of 5000 US test takers.

## Example of the style of a MSCEIT Vignette

Debbie just came back from vacation. She was feeling peaceful and content. How well would each action preserve her mood?

**Action 1** She started to make a list of things at home that she needed to do.

Very Ineffective ... 1 ... 2 ... 3 ... 4 ... 5 ... Very Effective

**Action 2** She began thinking about where and when she would go on her next vacation.

Very Ineffective ... 1 ... 2 ... 3 ... 4 ... 5 ... Very Effective

**Action 3** She decided it was best to ignore the feeling since it wouldn't last anyway

Very Ineffective ... 1 ... 2 ... 3 ... 4 ... 5 ... Very Effective

## Potential problems when using this measure for international assessments

- ▶ Social situations are culturally loaded
- ▶ Emotion management strategies are culturally loaded
- ▶ Test takers are rated based on responses from a US sample

# Goals for the international version of the MSCEIT

- ▶ Create a valid instrument for the assessment of social cognition
- ▶ Create a instrument that allows researchers to combine data from different countries

## Assessing the problem

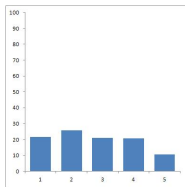
- ▶ How much do responses to the managing emotions branch of the MSCEIT differ?
- ▶ Data obtained during the international norming process of the MCCB provides the MSCEIT scores of an international sample of 1597 participants from seven selected regions with between  $n=197$  to  $n=351$  testtakers per region.

# Homogeneity

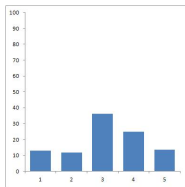
To determine which items of the MSCEIT were culturally independent we developed a set of homogeneity indices that allowed us to evaluate:

- ▶ The extent to which any two countries differ from each other
- ▶ Which two countries were most different from each other
- ▶ How large the overall variability between countries was

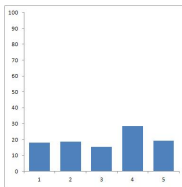
# Non-Homogeneous Item



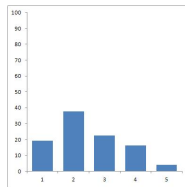
Central and South America



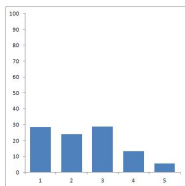
China



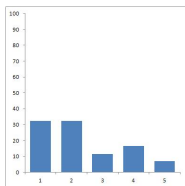
India



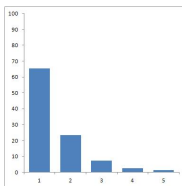
Japan



Russia



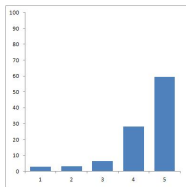
Spain



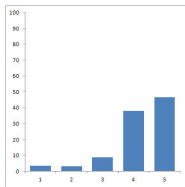
United States

Homogeneity Index=1174.7

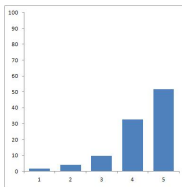
# Homogeneous Item



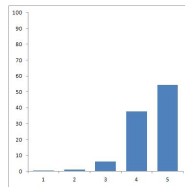
Central and South America



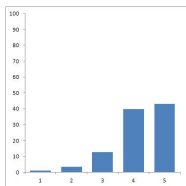
China



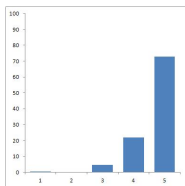
India



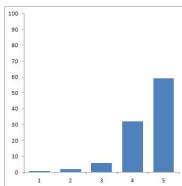
Japan



Russia



Spain



United States

Homogeneity Index=520.9

## Results of the Homogeneity Analyses

- ▶ The majority of responses patterns are relatively homogeneous across countries
- ▶ The source of inhomogeneity are not the vignettes in general, but the combination of specific emotion management strategies with the vignettes
- ▶ The inhomogeneous response patterns are not associated with specific social situations
- ▶ The inhomogeneous response patterns are not caused by specific countries that are consistently different from others
- ▶ There is no indication that the existing, US-normed MSCEIT is systematically culturally dependent
- ▶ Removing the most culturally dependent items is a robust strategy for creating an international version of the MSCEIT

# The international MSCEIT

Country	Correlation between the US MSCEIT & International MSCEIT
Central and South America	.97
China	.97
India	.97
Japan	.96
Russia	.96
Spain	.96

# Summary

- ▶ Assessments of social cognition are potentially more vulnerable to cultural loading than neurocognitive tests
- ▶ The international version of the emotion management branch of the MSCEIT minimizes cultural loading
- ▶ Scores from the international version of the emotion management branch of the MSCEIT are comparable between countries

# Thanks and Acknowledgments

Thanks to MHS for their generous support with both time and access to their proprietary data

Special thanks to the international collaborators for providing normative samples from all over the world - without them this would not have been possible