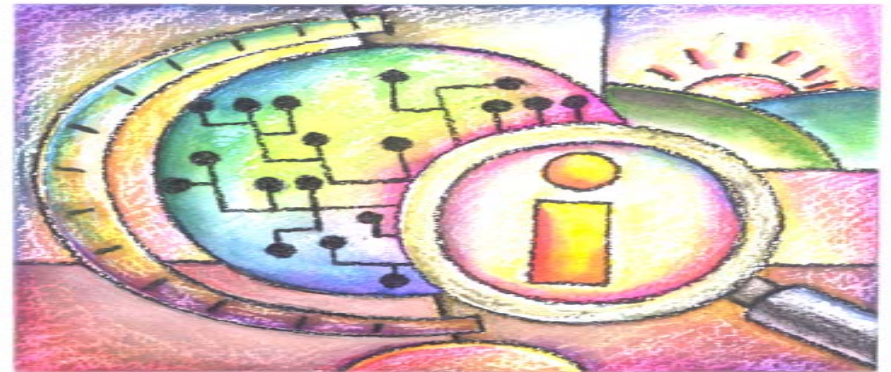


OptumHealthSM

Cornerstones of Health Reform: Bridging Policy and Science

A Behavioral Health Care Delivery System Perspective

Rhonda J Robinson Beale, MD
Chief Medical Officer
OptumHealth Behavioral Solutions
A United HealthCare Company

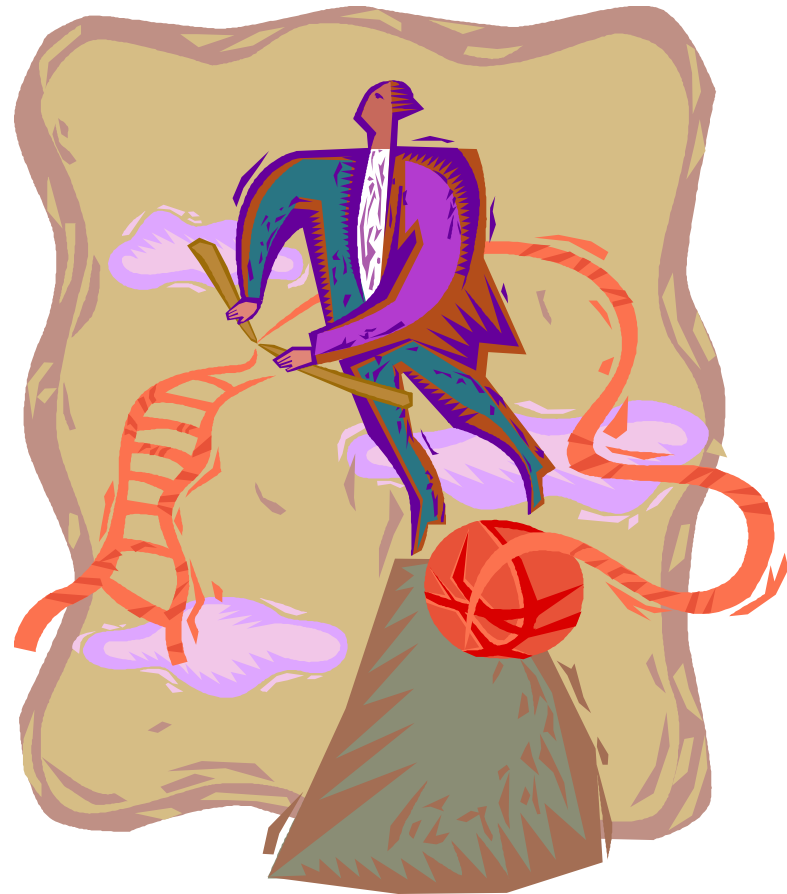


Health Care Reform – Early Direction

Health care reform has focused on

- expanding health insurance coverage
- making the health care system more efficient at a lower cost while providing higher quality.
 - moving away from fee-for-service toward a system that rewards quality,
 - replacing or restructuring the tax exclusion of employer-sponsored health care,
 - bundling payments for hospital and post-acute care with special attention to payment reforms related to readmission,
 - funding research on the comparative effectiveness of treatments coupled with payment changes.
- Health Information Technology funding to jumpstart computerized medical record
- Allocation of over \$10 billion for research and health service improvements

What Are The First Important Issues to Effectively Reform The Health Care System?



Bridging Policy and Science – Health Plan Perspective

Health Plan Role is to facilitate:

- evidence based treatment interventions to population served
- Access to quality providers
- High quality care
- Efficient use of health care benefit and reduction of waste
- Access to sound, effective and cost efficient treatments

Health Plans are a source of data:

- Diagnostic prevalence in treatment community
- Trend analysis of cost and utilization by condition, population segments, and where possible by treatment type
- Comprehensive data set - medical, pharmacy and behavioral claims, clinical demographics, productivity measures and in some cases actual clinical outcomes

Bridging Policy and Science – Health Plan Perspective

Health Plan Challenges:

- Dissemination and adoption of best practices by providers faster than 17.3 years
- Provider adoption of electronic capabilities in the practice setting
- Demonstrating clinical efficacy – effectiveness and cost value
- Transitioning new technology into accessible and funded by benefit services
- Application of research protocols to real world clinical delivery system
- Limited research in some areas and inability to cross compare results findings, (unclear population description, different measurement parameters, difficulty in applying results)

Behavioral Health Reformation Recommendations

Recommendations:

- Adopt the culture that “behavioral health is essential to health”, key to effective medical care and greatly influences over all cost of medical care.
- Make any behavioral health project funding contingent on clear demonstration of private public involvement.
- Create and fund a behavioral health “czar” an entity, person, existing agency (ies) or a collaborative that can assume the role of creating an behavioral health reform agenda and measurable outcomes to determine success.
- The role of the behavioral health “czar” is accountable for convening stakeholders, facilitating consensus, establishing priorities, monitoring progress toward goals and facilitating change to reach goals.

..... Testimony to the HELP Committee Feb 2009

Bridging Policy and Science

What can researchers do to focus their research on issues relevant to health reform and improved health care for persons with mental illness?

Bridging Policy and Science – Health Plan Perspective

Recommendations:

- Aligned with the culture of “no health without behavioral health”.
 - Assure there is earmarked funding for behavioral health counterparts initiatives

- Convene a national research agenda that is:
 - Prioritized
 - Measurable to determine success
 - Aligned to relevant areas
 - Short term objectives
 - Areas of large family and societal burden/cost, most complexity and/or has less defined successful interventions
 - Has meaningful input from all stakeholders, (consumers, researchers, health plans, employers, health policy and communities).

Bridging Policy and Science – Health Plan Perspective

Recommendations:

Integration and Standardization of Research Protocols

- Establish as a culture and requirement of standardization
 - **Integration** means bringing together studies done in isolation into a common platform and centralize the data base
 - To do this, and pool data, the research parameters and methods of assessing must be standardized
 - **Standardization** means each time a person is assessed, the **exact** procedure is replicated in an invariant procedure, and scored using an invariant procedure

Establish the central data base for meaningful integration of datasets

Provide access to the data base to promote low cost and informative descriptive analysis and matched controlled comparisons

Consensus Statement on the Need for Standardization of Data in Neurobiological Research

Quote from the 2008 IOM Workshop Summary on Neurobiological Markers

Imaging tools are being used to discover surrogate biomarkers, guide therapeutic development, and detect and track disease progression; there is further hope in new, increasingly sophisticated technologies. Although the imaging field has many tools at hand, there is still no widely accepted surrogate biomarker for nervous system disorders using imaging tools. In addition, there are challenges to expansion that include validation of images, standardization of imaging protocols, and sophisticated informatics that would allow integration of various data. Another major for molecular defects. One effort under way is the establishment of a clearinghouse for radiotracers that would allow interested parties to share tracers. This concept is still under development; however, it is showing progress. Combining structural and functional imaging biomarkers (e.g., computed tomography and magnetic resonance imaging [MRI] with positron emission tomography [PET]) offers exciting opportunities for advancement in the future as well.

Bridging Policy and Science – Health Plan Perspective

Recommendations:

Convene those with existing data stores (public and private, CMS, Health plans, Accreditation) into a collaborative effort focused on standardization and integration of data sets.

Health Care Reform -National Standardization of Performance Measurements

Consistent, standard measuring tools, parameters and methodology provides the platform for uniform measurement across many variables and makes possible lower cost and easier research and is a **single source of truth** for:

- comparisons of
 - healthcare patterns (individual patients, condition based populations, subpopulations by geography, ethnicity/race)
 - healthcare outcomes (measurement of true outcomes)
 - provider performance (clinical effectiveness and efficiency)
 - Provide easy access to quality information
- Transparency of results
 - Drive clear decisions of treatment options
 - Inform and drive provider improvement
 - Drives waste out of clinical process

**“Innovation – Redesigning the status quo
to create and deliver new value”**

-Berwick

***“Knowing is not enough, we must apply
Willing is not enough, we must do”***

-Goethe

**Rhonda J Robinson Beale MD
Chief Medical Officer
OptumHealth Behavioral Solutions
Rhonda.robinsonbeale@phs.com**